



AMPLIFIER SOLUTIONS CORPORATION

ASC224C

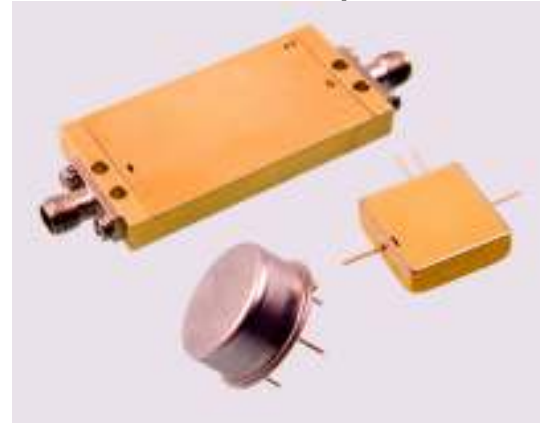
Features: (typical values)

- Very high IP3 +44 dBm.
- High Gain +25.0 dB.
- High IP2 +58 dBm
- Low NF 3.0 dB.
- Super Linearity

Maximum Ratings

Storage Temperature -62°C to +125°C
 DC Voltage +17 volts
 RF Input Power +13.0 dBm.
 Case Temperature +95°C

100-2000 MHz Wideband Amplifier



Specifications (Referenced to 50 ohms)

Parameter	Typical Conditions	Min Value	Max Value	Units
Frequency		100	2000	MHz.
Gain	24.0	23.0		dB.
Gain Flatness	±0.5		±1.0	dB.
Gain Var. over temp	0.5			ΔdB.
Pout @ 1dB Comp	+26.0	+24.0		dBm.
NF	3.0		5.0	dB.
Reverse Isolation	40.0			dB.
IP ₃ /IP ₂ (two-tone)	44/60	40/50		dBm.
HIP2 (2 nd harm.)	66.0			dBm.
VSWR In/Out	1.7:1		2.0:1	
Supply Required	+15/200		+15/220	v/mA.

Min. and max. values are from -40°C to +85°C

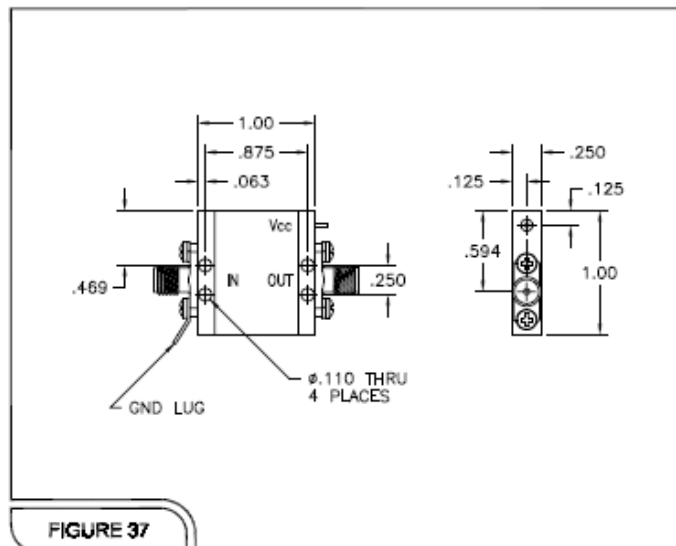


FIGURE 37

Typical Performance Curves

■ -40°C ◆ -+25°C ▲ -+85°C

