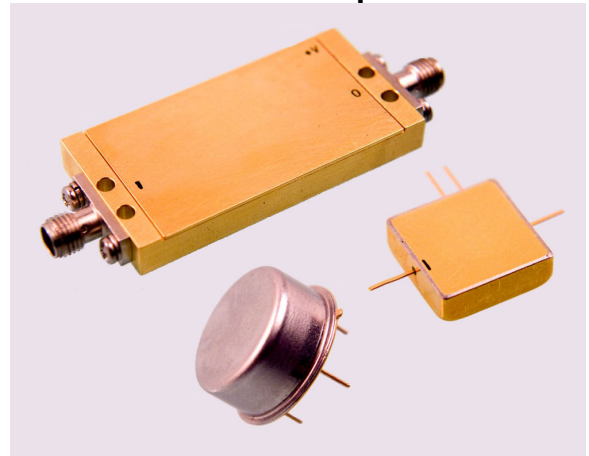


ASC404C-1

Features: (typical values)

- Low Distortion
- High Second Order IP2 +70.0 dBm.
- High Third Order IP3 +47.0 dBm.
- Low NF 4.0 dB.
- Hermetic Package (Surface Mount available)

1-200 MHz Push Pull Amplifier



Maximum Ratings

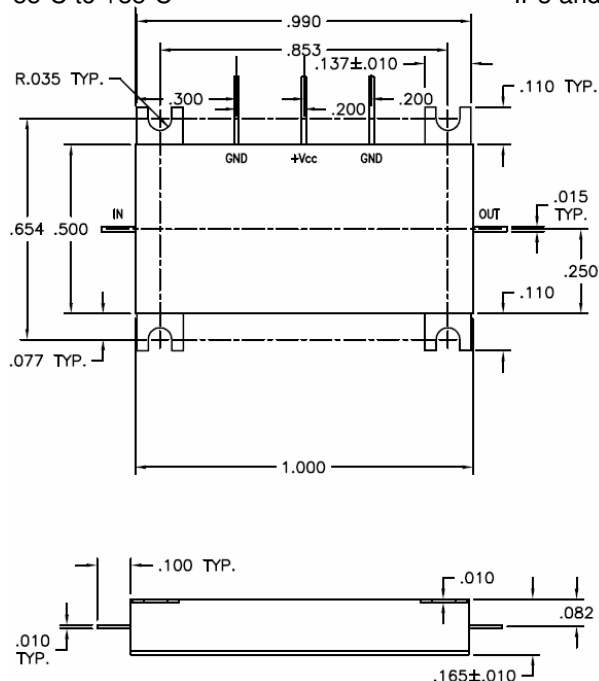
Storage Temperature -62°C to +125°C
 DC Voltage +20 volts
 RF Input Power +20.0 dBm.
 Case Temperature +90°C

Specifications (Referenced to 50 ohms)

| Parameter | Typical Conditions | Min Value | Max Value | Units |
|--|--------------------|-----------|-----------|-------|
| Frequency | | 1 | 200 | MHz. |
| Gain | 18 | 17.0 | 20.0 | dB. |
| Gain Flatness | ±0.5 | | ±1.0 | dB. |
| Gain Var. over temp | 0.7 | | | ΔdB. |
| Pout @ 1dB Comp | +30 | +26 | | dBm. |
| Noise Figure | 4.0 | | 5.0 | dB. |
| Reverse Isolation | 22 | | | dB. |
| IP ₃ /IP ₂ (two-tone)* | 47/70 | 41/60 | | dBm. |
| HIP2 (2 nd harm.) | 76 | 63 | | dBm. |
| VSWR In/Out | 1.5:1 | | 2.0:1 | |
| Supply Required | +15/250 | | +18/280 | v/mA. |

Min. and max. values are from -55°C to +85°C

*IP3 and IP2 are in band output intercept points



Typical Performance Curves

■ -55°C ◆ -+25°C ▲ -+85°C

