

## RF Amplifier

- \* Operating Frequency : 10-500 MHz
- \* Gain : 16 dB
- \* High IP3 37dBm
- \* High IP2 60dBm

### ELECTRICAL SPECIFICATION @ VDD= +12 VDC; Temp. = 25°C, 50Ω System

Parameter	Symbol	Min	Typ	Max	Unit
Operating Frequency	BW	10		500	MHz
Gain	G	15	16	18	dB
Gain Flatness	Δ G		±0.3	±0.5	dB
Noise Figure	N.F.		2.5	3	dB
Output Power	P 1dB	25	23		dBm
Two Tone Intercept @ 15dBm output per tone	IP3	35	37		dBm
Two Tone Intercept @ 15dBm output per tone	IP2	56	60		dBm
VSWR in/out	S11/S22		1.6:1	1.8:1	Ratio
Operating Voltage	Vdc		12		Volt
Operating Current	Id		200	220	ma

### MECHANICAL SPECIFICATION

Parameter	Description	Limits	Units
Dimension	Flatpack		
Cooling	None		
Monitor Connector	None		

### PROTECTION

	Max	
RF Input Power	15	dBm
Reverse Polarity Protection	N/A	
Load VSWR	Infinite up to 1W	
Stability	100% Tested	

### ENVIRONMENTAL CHARACTERISTICS

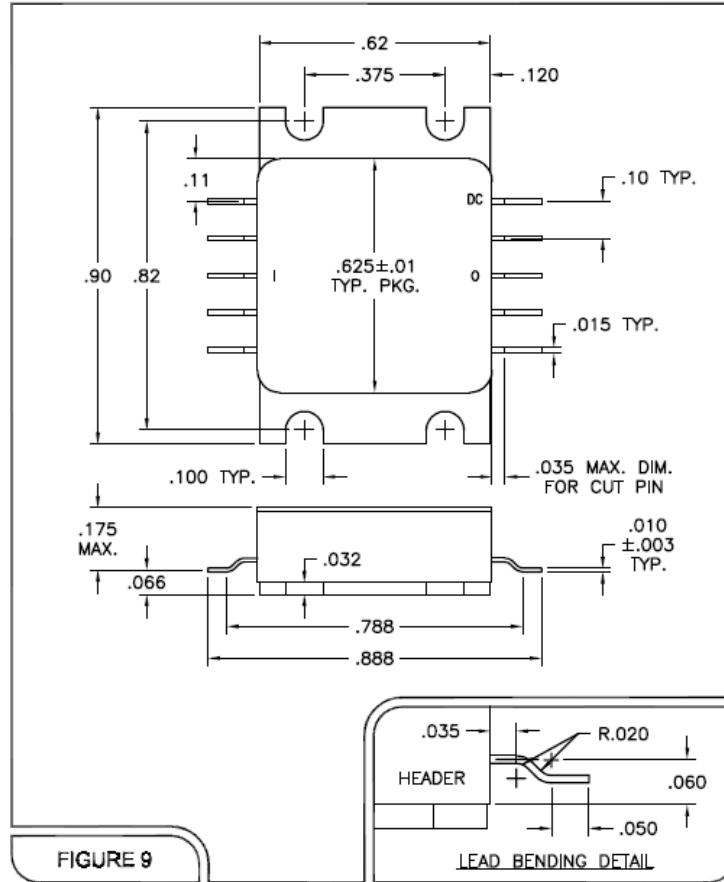
Parameter	Symbol	Min.	Typ.	Max.	Units
Operating Case Temperature	Tc	- 40		70	°C
Storage Temperature	Tstg	- 55C		120°C	°C

3009 Old State Road Telford Pa 18969

Web: [www.amplifiersolutions.com](http://www.amplifiersolutions.com)  
 Email: [sales@amplifiersolutions.com](mailto:sales@amplifiersolutions.com)

Tel: 215-997-7856  
 Fax: 215-997-7857

Outline Drawing



3009 Old State Road Telford Pa 18969

Web: [www.amplifiersolutions.com](http://www.amplifiersolutions.com)  
 Email: [sales@amplifiersolutions.com](mailto:sales@amplifiersolutions.com)

Tel: 215-997-7856  
 Fax: 215-997-7857