

Features: (typical values)

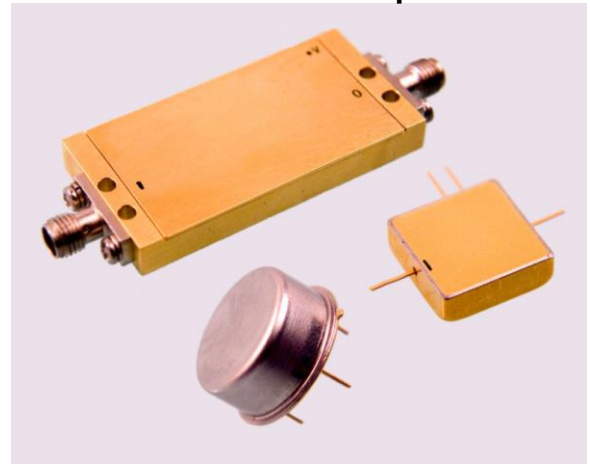
- Low Noise..... 1.0 dB.
- Medium Power Out + 18 dBm.
- Medium Gain +23 dB.
- No external components required

Maximum Ratings

Storage Temperature -55°C to +125°C
 DC Voltage +15 volts
 RF Input Power +15.0 dBm.
 Case Temperature +95°C

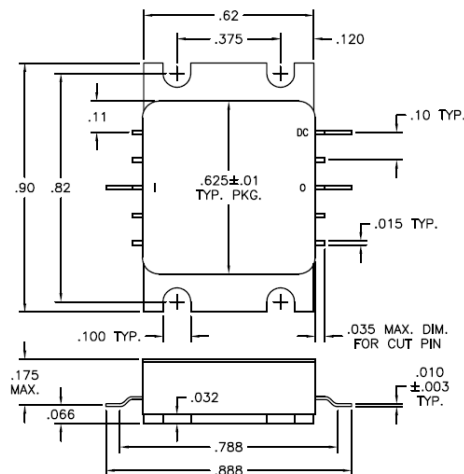
Specifications (Referenced to 50 ohms)

**2300-2500 MHz
Low Noise Amplifier**



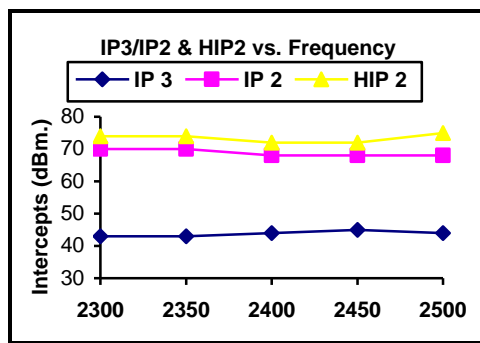
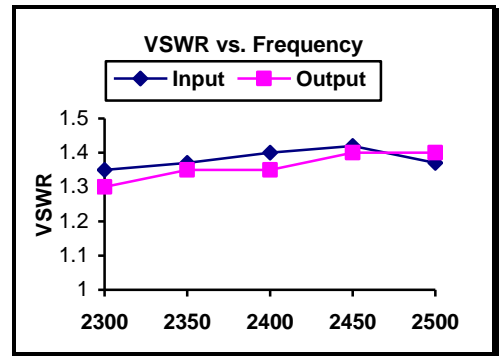
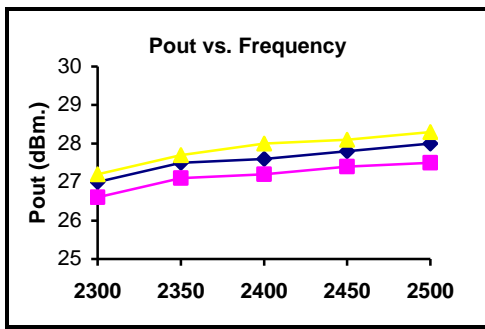
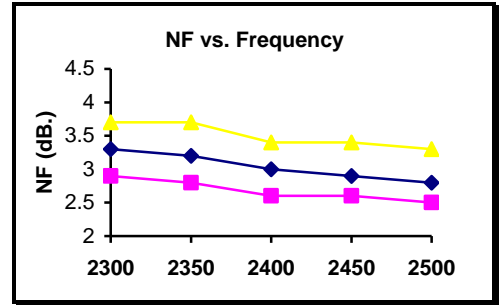
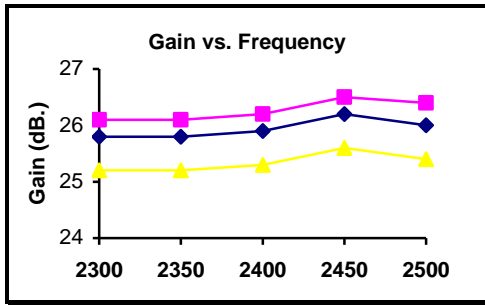
Parameter	Typical Conditions	Min Value	Max Value	Units
Frequency		2300	2500	MHz.
Gain	23	21		dB.
Gain Flatness	±0.3		±0.8	dB.
Gain Var. over temp.	0.5			ΔdB.
Pout @ 1dB Comp	+18	+16		dBm.
Noise Figure	1.0		1.5	dB.
Reverse Isolation	40			dB.
IP ₃ /IP ₂ (two tone)*	28/35			dBm.
HIP ₂ (2 nd harm.)	45			dBm.
VSWR In/Out	1.4:1		1.8:1	Ratio
Supply Required	+12V/82		+12V/95	v/mA

Min. and max. values are from 0°C to +85°C
 *IP₃ and IP₂ are in band output intercept points

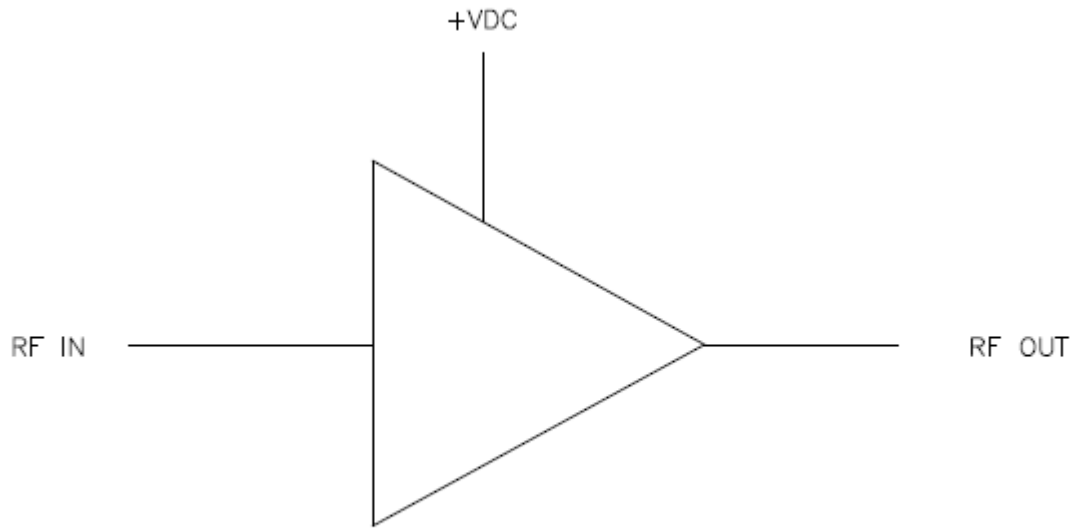


Typical Performance Curves @ 25°C

■ -0°C ◆ +25°C ▲ +85°C



FUNCTIONAL BLOCK DIAGRAM



NO EXTERNAL COMPONENT REQUIRED