

## RF Amplifier

- \* Operating Frequency : 400-3000 MHz.
- \* Gain : 22 dB.
- \* High IP3 36 dBm.
- \* High IP2 47 dBm.
- \* No external components required

### ELECTRICAL SPECIFICATION @ VDD= +15 VDC; Temp. = 25°C, 50Ω System

Parameter	Symbol	Min	Typ	Max	Unit
Operating Frequency	BW	400		3000	MHz.
Gain	G	20	22	24	dB.
Gain Flatness	Δ G		±0.7	±1.0	dB.
Noise Figure	N.F.		3	4	dB.
Output Power	P 1dB	24	25		dBm.
Two Tone Intercept @ 15dBm output per tone	IP3	34	36		dBm.
Two Tone Intercept @ 15dBm output per tone	IP2	44	47		dBm.
VSWR in/out	S11/S22		1.5:1	1.7:1	Ratio
Operating Voltage	Vdc		15		Volt
Operating Current	Id		230	250	mA.

### MECHANICAL SPECIFICATION

Parameter	Description	Limits	Units
Dimension	Flatpack		
Cooling	None		
Monitor Connector	None		

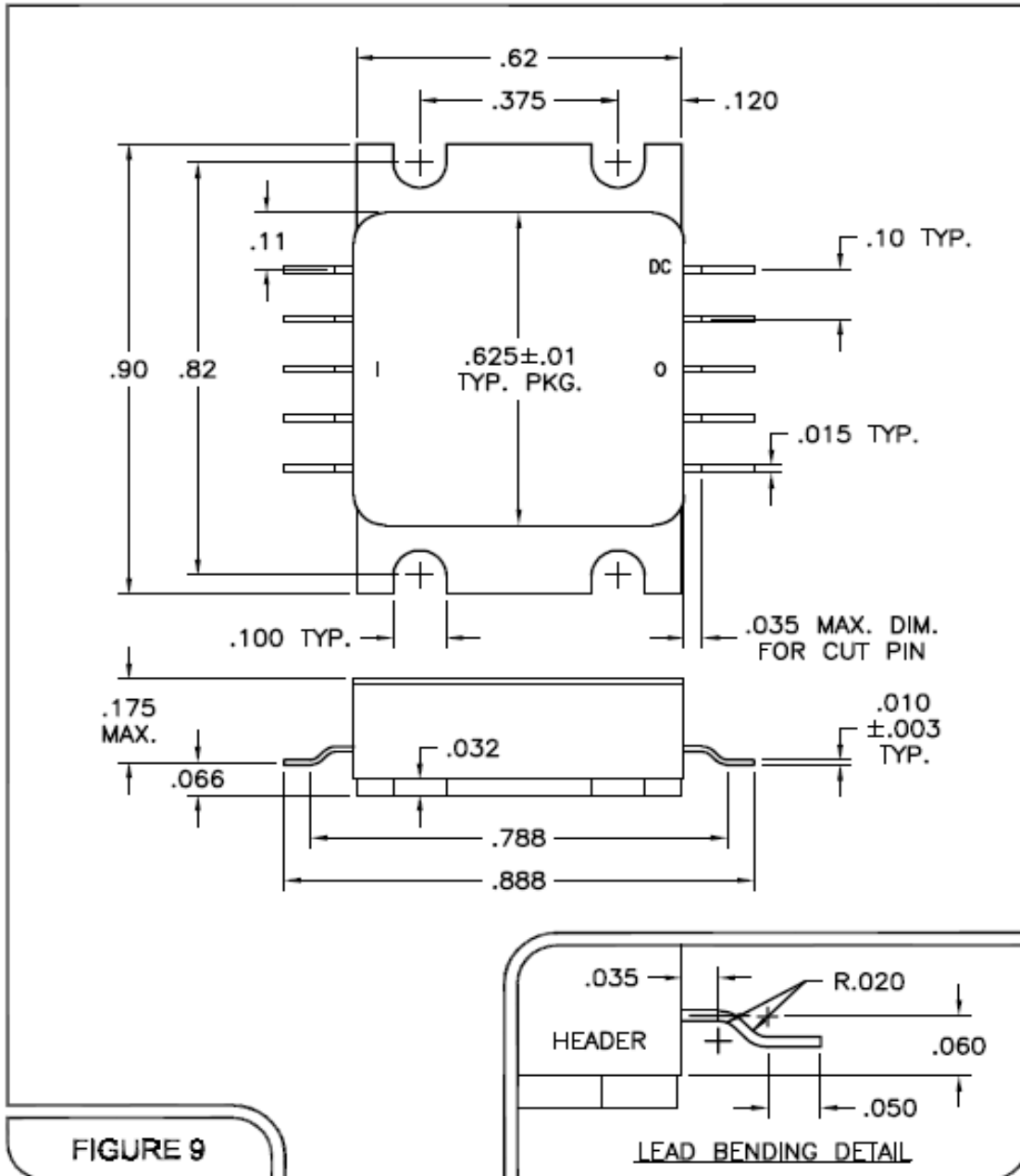
### PROTECTION

		Max	
RF Input Power		30	dBm.
Reverse Polarity Protection	N/A		
Load VSWR	Infinite up to 1W		
Stability	100% Tested		

### ENVIRONMENTAL CHARACTERISTICS

Parameter	Symbol	Min.	Typ.	Max.	Units
Operating Case Temperature	Tc	- 40		70	°C
Storage Temperature	Tstg	- 55C		120°C	°C

Outline Drawing



FUNCTIONAL BLOCK DIAGRAM

