

RF Amplifier

- * Operating Frequency : 2-88 MHz.
- * Gain : 17 dB.
- * High IP3 44 dBm.
- * High IP2 75 dBm.
- * No external components required

ELECTRICAL SPECIFICATION @ VDD= +15 VDC; Temp. = 25°C, 50Ω System

Parameter	Symbol	Min	Typ	Max	Unit
Operating Frequency	BW	2		88	MHz.
Gain	G	16	17	18	dB.
Gain Flatness	Δ G		±0.3	±0.5	dB.
Noise Figure	N.F.		3.5	4.5	dB.
Output Power	P 1dB	25	27		dBm.
Two Tone Intercept @ 15dBm output per tone	IP3	40	43		dBm.
Two Tone Intercept @ 15dBm output per tone	IP2	60	75		dBm.
VSWR in/out	S11/S22		1.4:1	1.6:1	Ratio
Operating Voltage	Vdc		15		Volt
Operating Current	Id		200	220	mA.

MECHANICAL SPECIFICATION

Parameter	Description	Limits	Units
Dimension	Flatpack		
Cooling	None		
Monitor Connector	None		

PROTECTION

	Max	
RF Input Power	30	dBm.
Reverse Polarity Protection	N/A	
Load VSWR	Infinite up to 1W	
Stability	100% Tested	

ENVIRONMENTAL CHARACTERISTICS

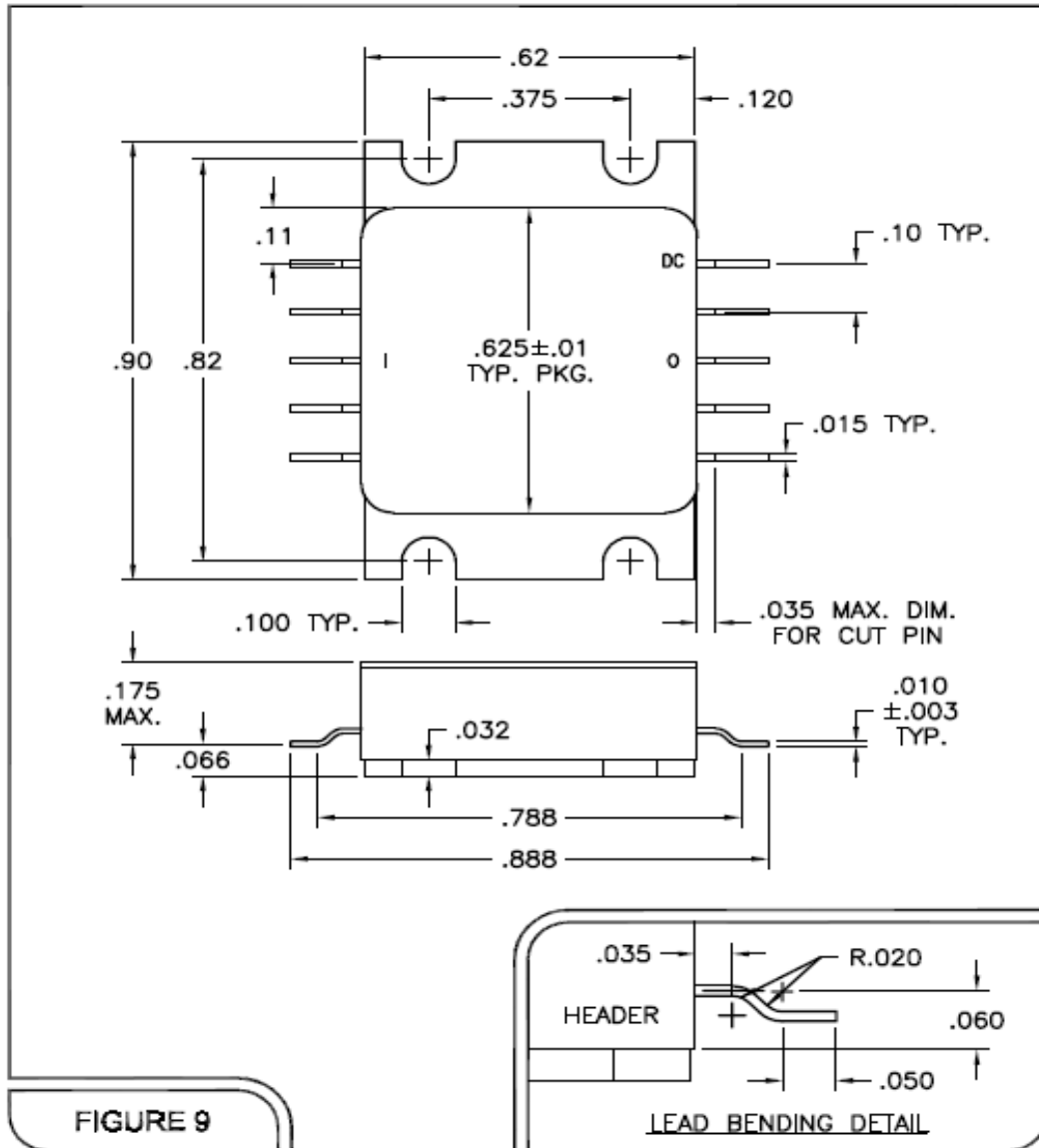
Parameter	Symbol	Min.	Typ.	Max.	Units
Operating Case Temperature	Tc	- 40		70	°C
Storage Temperature	Tstg	- 55C		120°C	°C

3009 Old State Road, Telford, PA 18969

Web: www.amplifiersolutions.com
 Email: sales@amplifiersolutions.com

Tel: 215-799-2561
 Fax: 215-799-2563

Outline Drawing

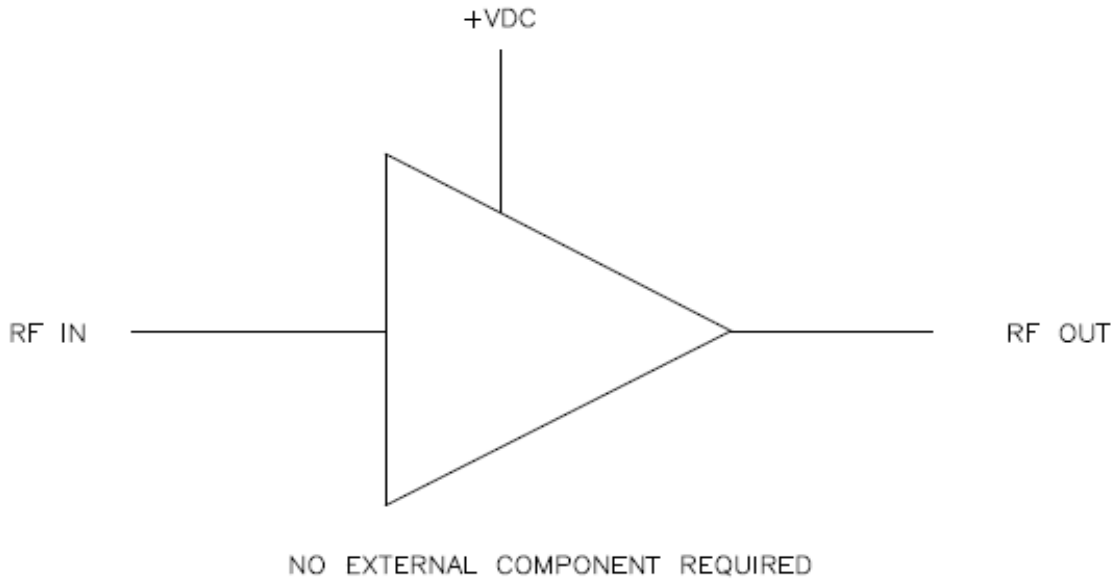


3009 Old State Road, Telford, PA 18969

Web: www.amplifiersolutions.com
 Email: sales@amplifiersolutions.com

Tel: 215-799-2561
 Fax: 215-799-2563

FUNCTIONAL BLOCK DIAGRAM



3009 Old State Road, Telford, PA 18969

Web: www.amplifiersolutions.com
Email: sales@amplifiersolutions.com

Tel: 215-799-2561
Fax: 215-799-2563