

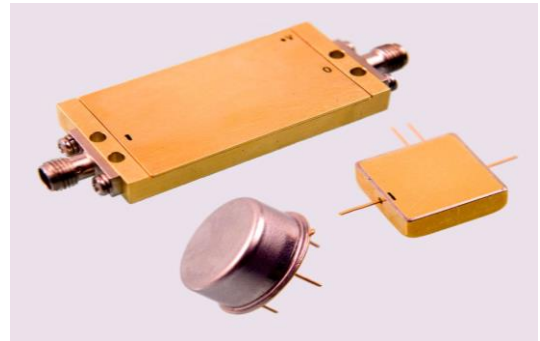
Features: (typical values)

- Output Power +22 dBm.
- Low Noise 5.0 dB.
- High Gain +28 dB.
- No external components required

Maximum Ratings

- Storage Temperature -62°C to +125°C
 DC Voltage +15volts
 RF Input Power CW +10 dBm.
 Case Temperature +95°C

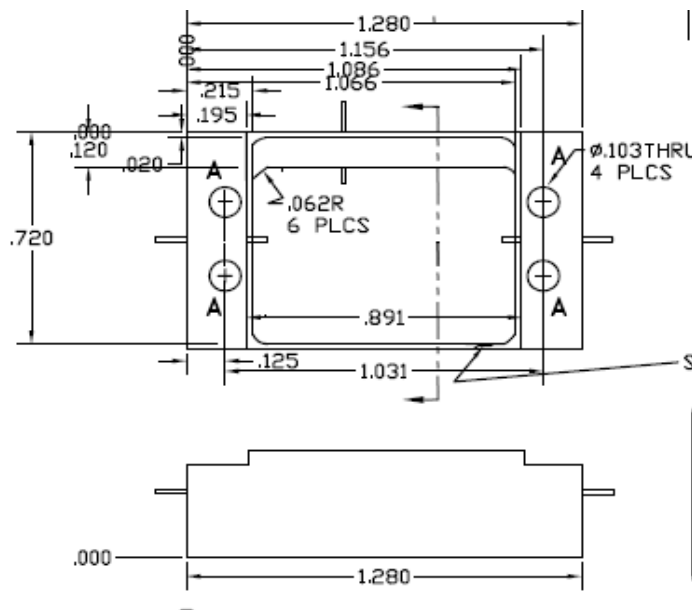
**16CD0031-2
Wideband Amplifier**



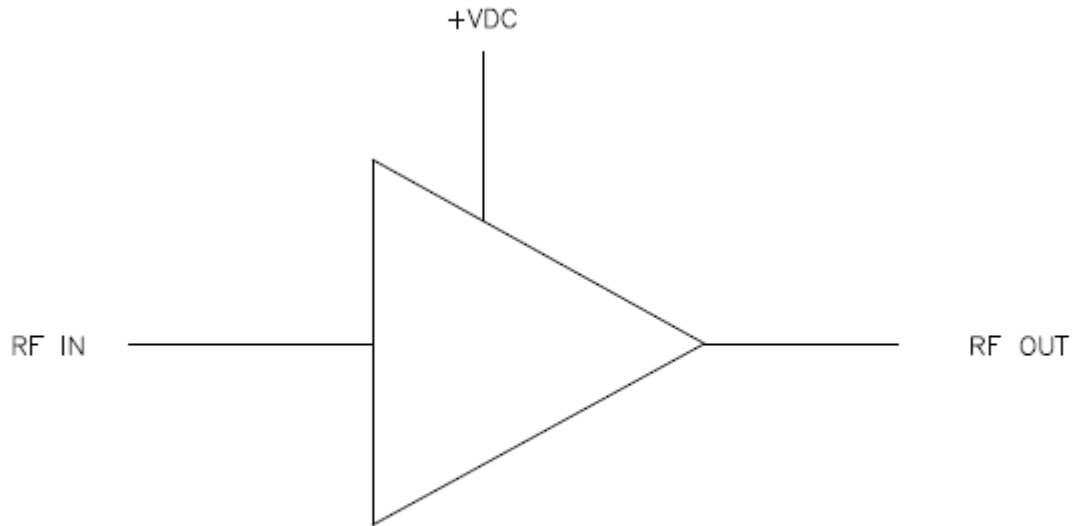
Specifications (Referenced to 50 ohms Impedance)

Parameter	Typical Conditions	Min Value	Max Value	Units
Frequency		8	16	GHz.
Gain	24	22	26	dB.
Gain Flatness	±0.75		±1.0	dB.
Reverse Isolation		30		dB.
Pout @ 1dB Comp	22	20.0		dBm.
Pout @ 3dB Comp	25		28.0	dBm.
NF	5.0		5.5	dB.
OIP ₃ (two-tone)	30	28.0		dBm.
OIP ₂ (two-tone)	40	38.0		dBm.
VSWR in	1.8		2.2:1	Ratio
VSWR Out	1.6		1.8:1	Ratio
Supply Required			15V/750	v/mA.

Min. and max. values are from -55°C to +70°C



FUNCTIONAL BLOCK DIAGRAM



NO EXTERNAL COMPONENT REQUIRED