

Features: (typical values)

- Output Power – 28dbm. @ 1dB. compression,
- IP3 – 45 dBm.
- NF – 4.5 dB
- Unconditional Stability
- No external components required

**2 - 30.0 MHz
Push-Pull Amplifier**

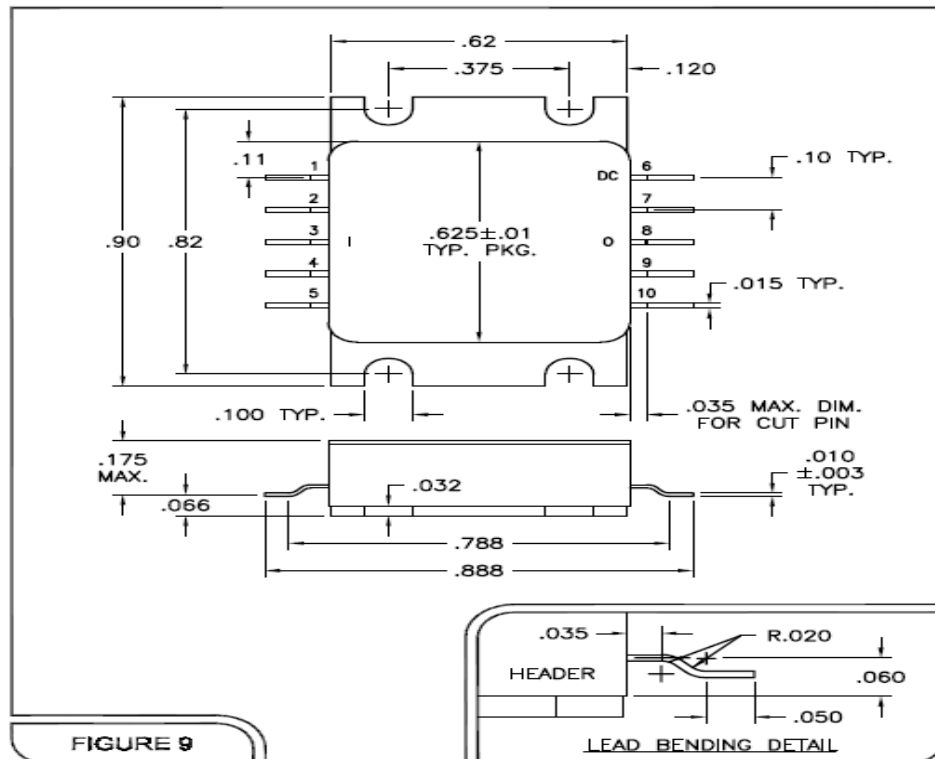


Maximum Ratings

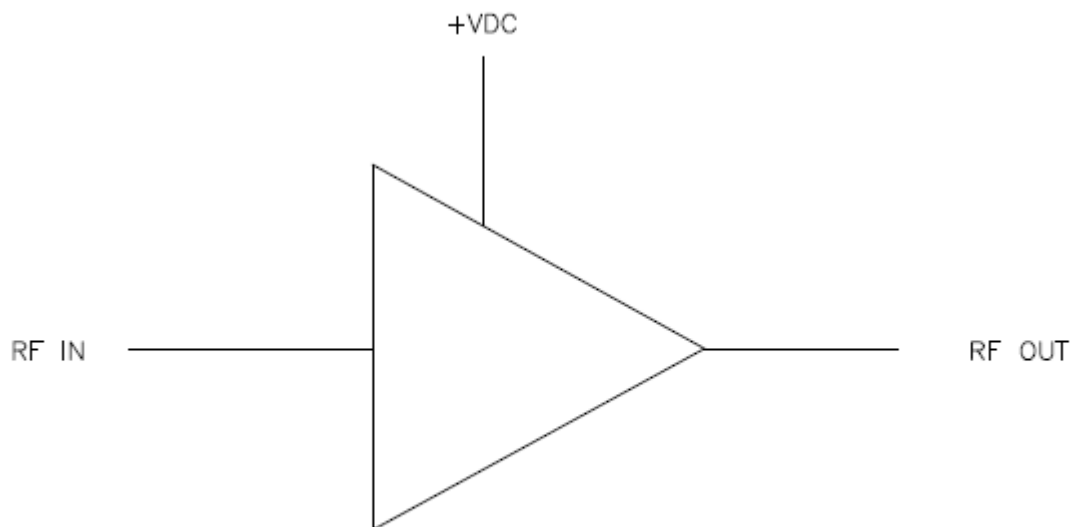
Storage temperature -55°C to +125°C
 DC Operating Voltage +13.0 volts
 RF Input Voltage +20dBm. Max.
 Operating Base Temp -20 to +85°C

Specifications @ Tcase = 25°C, Vcc = 12V, 50 ohm systems unless otherwise noted.

Parameter	Typical Conditions	Min Value	Max Value	Units
Frequency Range		2	30	MHz.
Power Gain	12.5	12	14	dB.
Gain Flatness (peak to peak)	±0.3		±0.5	dB.
Input VSWR	1.3		1.5:1	-
Output VSWR	1.3		1.5:1	-
Reverse Isolation	20.0			dB
Noise Figure	4.5		5.0	dB.
Power Output- 1dB Compression	28	27		dBm.
Third Order Intercept (IP3) @ 15 dBm per tone	45	43		dBm.
Supply Current @ 12 Volts	200		230	mA.
Operating Temperature -20C to +85C				



FUNCTIONAL BLOCK DIAGRAM



NO EXTERNAL COMPONENT REQUIRED