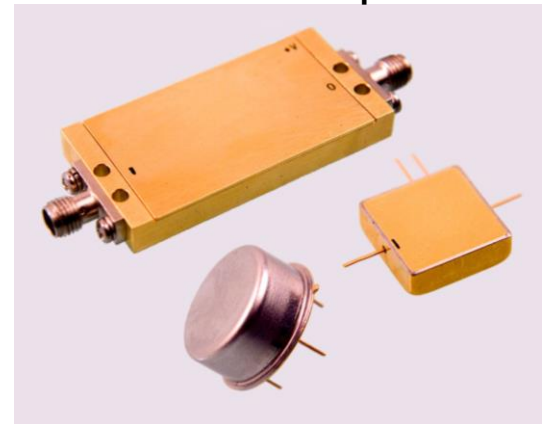


# ASC2416C

## 2-500 MHz Cascadable Amplifier



### Features: (typical values)

- Noise Figure ..... 3.0 dB.
- Med Power ..... 22 dBm.
- Low Cost
- No external components required

### Maximum Ratings

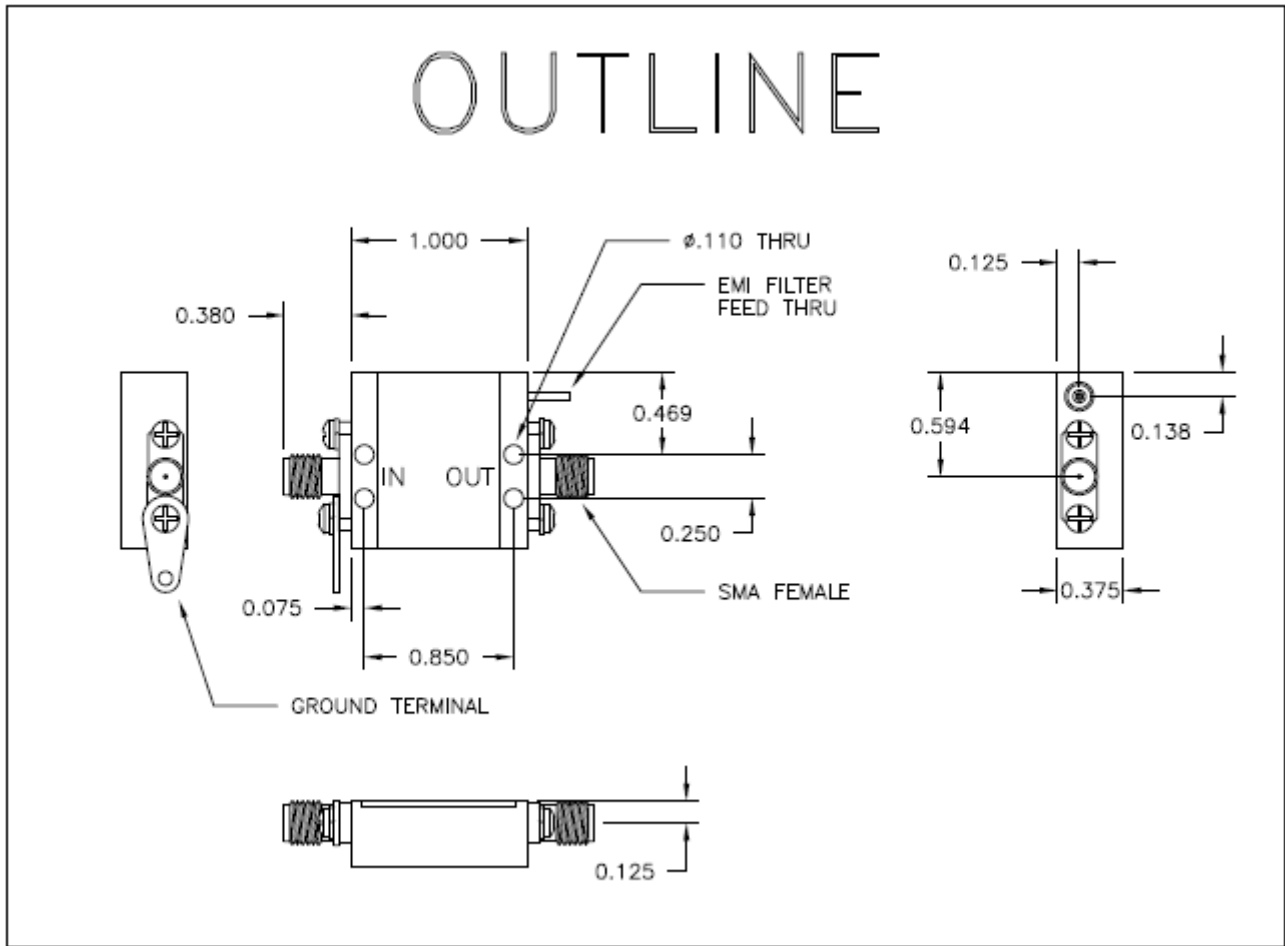
Storage Temperature ..... -62°C to +125°C  
 DC Voltage ..... +17 volts  
 RF Input Power ..... +15.0 dBm.  
 Case Temperature ..... +100°C

### Specifications (Referenced to 50 ohms)

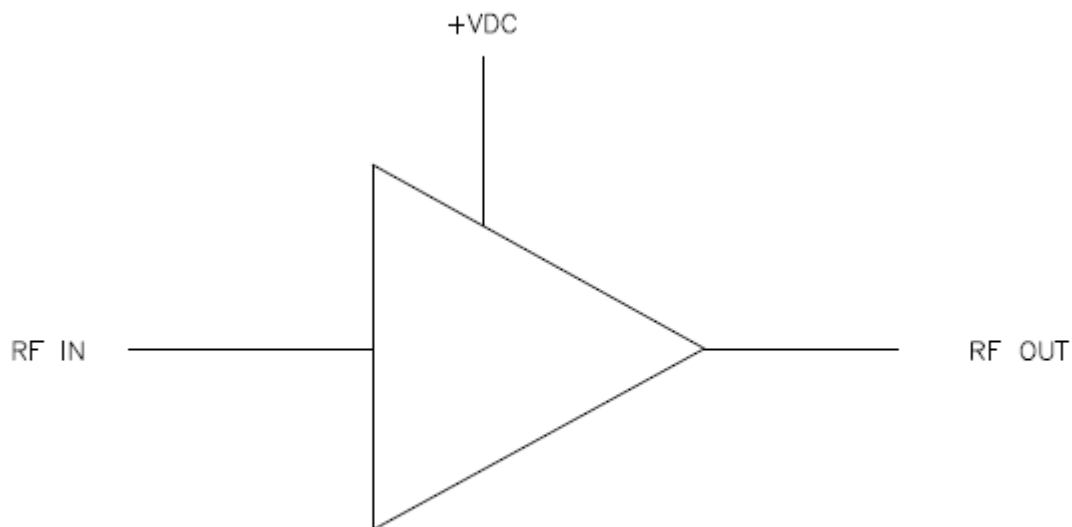
Parameter	Typical Conditions	Min Value	Max Value	Units
Frequency		2	500	MHz.
Gain	12	10		dB.
Gain Flatness	±0.3		±0.5	dB.
Gain Var. over temp	0.6			ΔdB.
Pout @ 1dB Comp	+22	+20		dBm.
Noise Figure	3.0		4.0	dB.
Reverse Isolation	20			dB.
IP <sub>3</sub> /IP <sub>2</sub> (two-tone)*	33/45	30/40		dBm.
HIP2 (2 <sup>nd</sup> harm.)	40			dBm.
VSWR In/Out	1.5:1		2.0:1	
Supply Required	+15/100		+15/120	v/mA.

Min. and max. values are from -55°C to +85°C  
 \*IP<sub>3</sub> and IP<sub>2</sub> are in band output intercept points

# OUTLINE



FUNCTIONAL BLOCK DIAGRAM



NO EXTERNAL COMPONENT REQUIRED