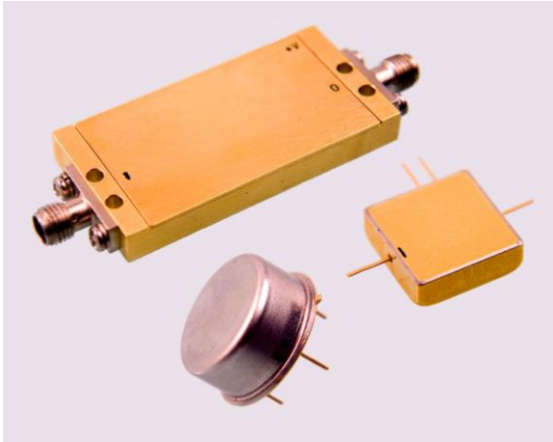


Features: (typical values)

- Wideband Frequency 800-4200 MHz.
- Medium Power Out +20.0 dBm.
- Moderate Gain +10 dB.
- Moderate Noise +4.0 dB.
- No external components required

Maximum Ratings

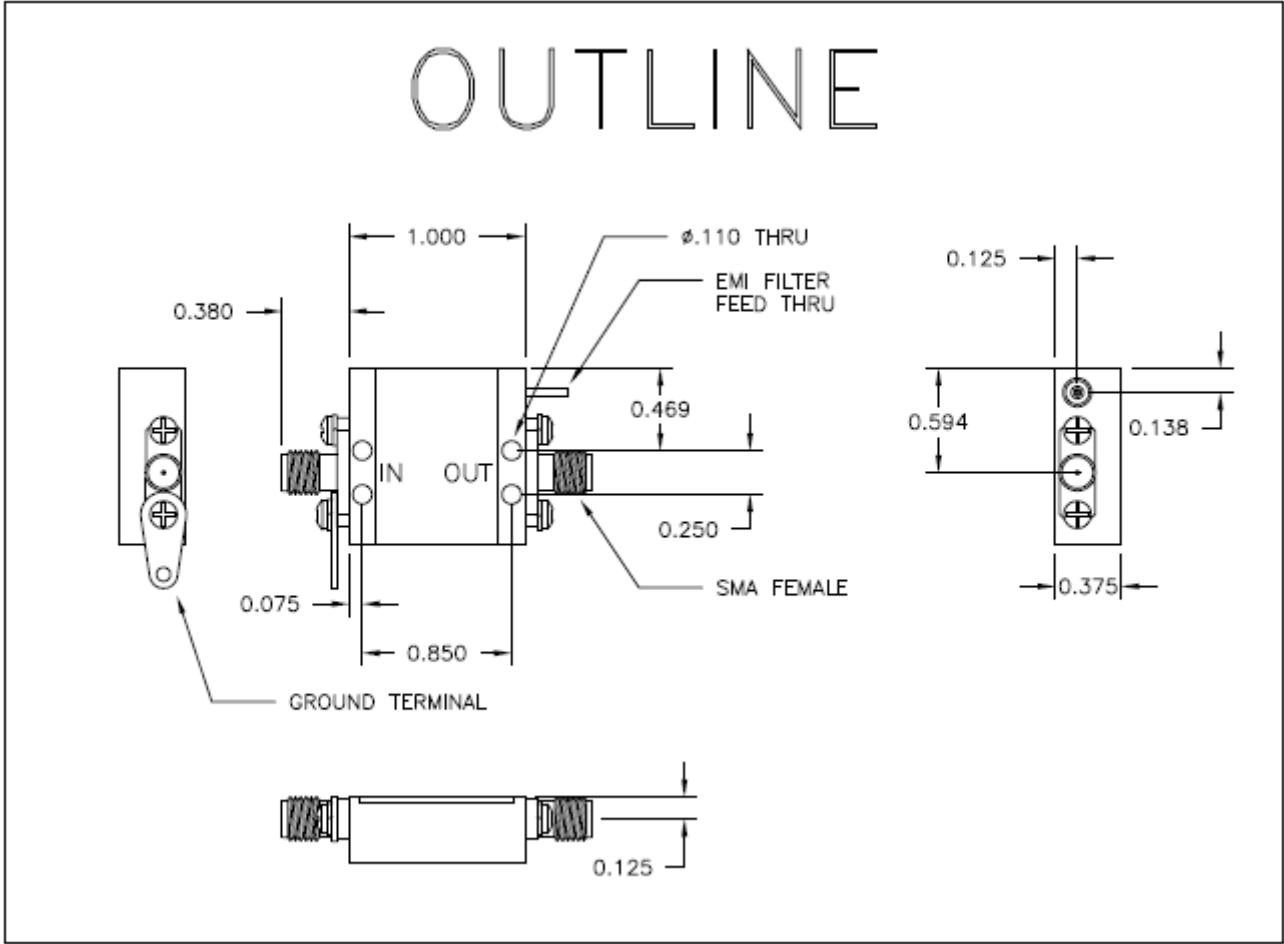
Storage Temperature -55°C to +125°C
 DC Voltage +14 volts
 Continuous RF Input Power +10.0 dBm.
 Case Temperature +95°C



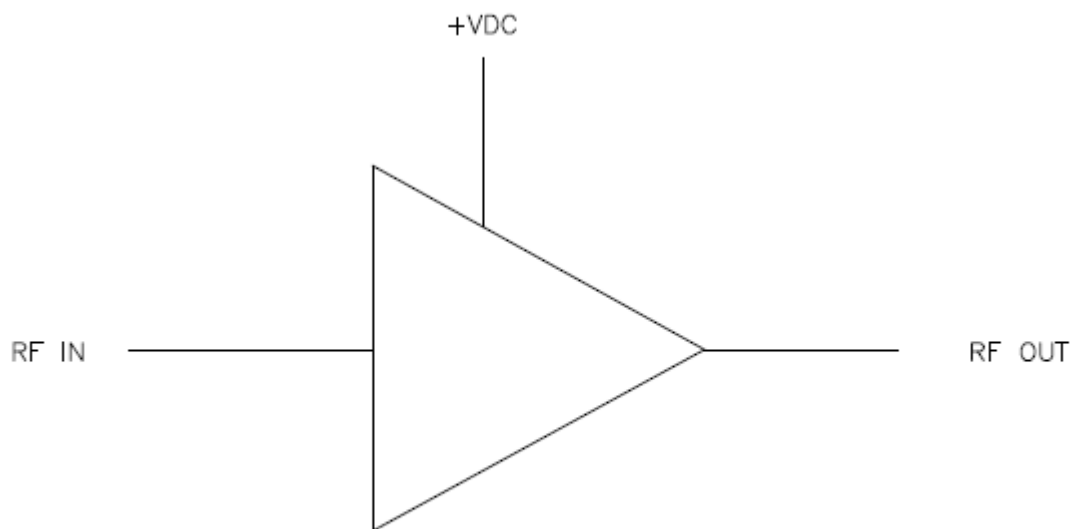
Specifications (Referenced to 50 ohms)

Parameter	Typical Conditions	Min Value	Max Value	Units
Frequency		800	4200	MHz.
Gain	10	8		dB.
Gain Flatness	±0.8		±1.5	
Gain Var. over temp.	0.5			
Pout @ 1dB Comp	+20	+18		dBm.
Noise Figure	4.0		5.0	dB.
Reverse Isolation	18			dB.
IP ₃ /IP ₂ (two tone)*	30/35			dBm.
VSWR In/Out	1.5:1		2.0:1	
Supply Required	+12/80		+12V/100	v/mA.

Min. and max. values are from 0°C to +85°C
 *IP₃ and IP₂ are in band output intercept points



FUNCTIONAL BLOCK DIAGRAM



NO EXTERNAL COMPONENT REQUIRED