

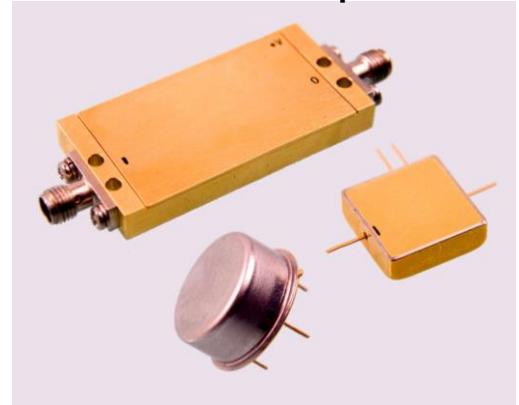
Features: (typical values)

- Low NF..... +4.5 dB.
- Medium P1dB 17.0 dBm.
- High Gain 40.0 dB.
- No external components required

Maximum Ratings

Storage Temperature -62°C to +125°C
 DC Voltage +17 volts
 RF Input Power +5.0 dBm.
 Case Temperature +95°C

**10-2000 MHz
Wideband Amplifier**

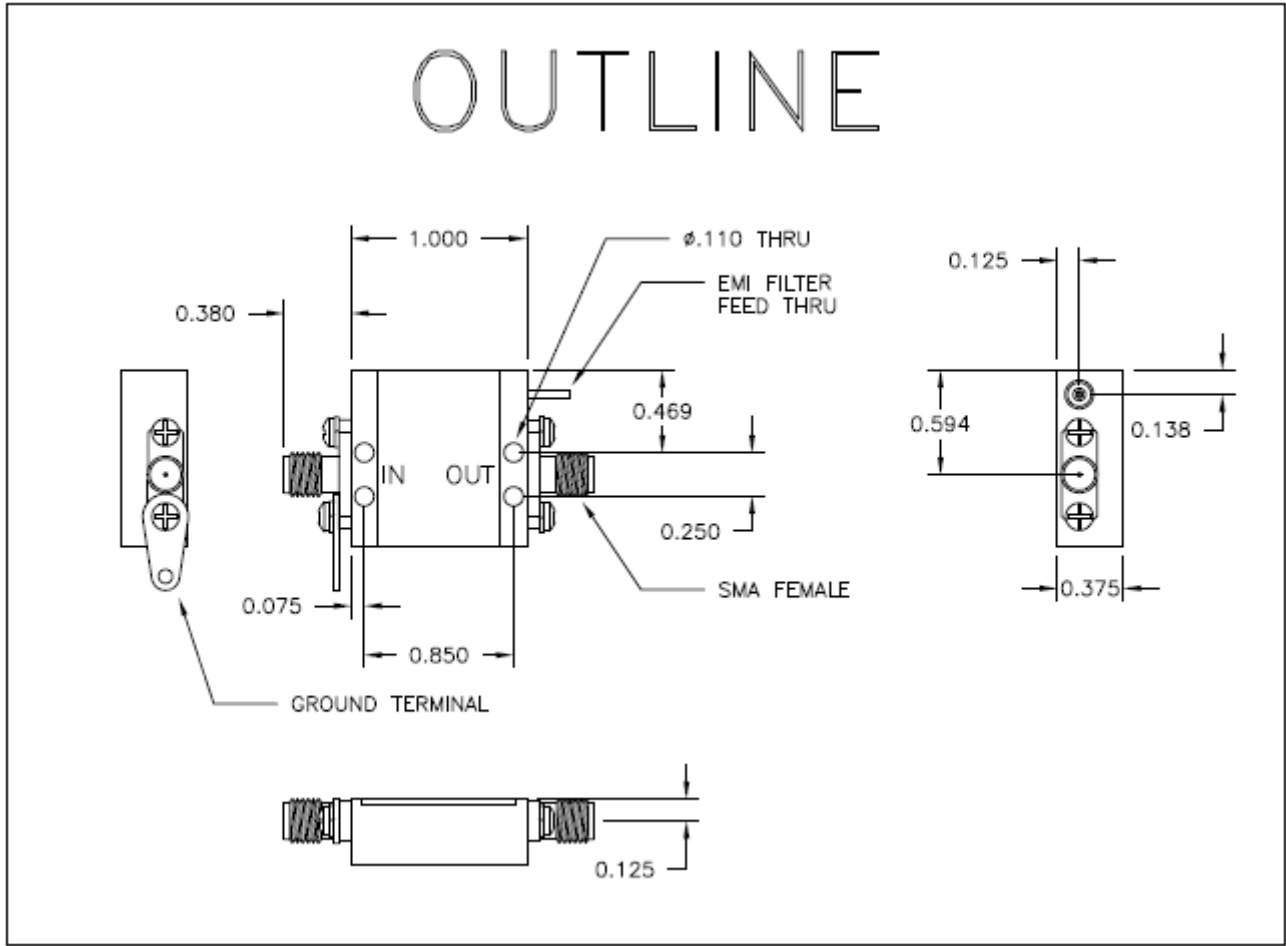


Specifications (Referenced to 50 ohms)

Parameter	Typical Conditions	Min Value	Max Value	Units
Frequency		10	2000	MHz.
Gain	40.0	38.0		dB.
Gain Flatness	±0.7		±1.5	dB.
Gain Var. over temp	0.7			ΔdB.
Pout @ 1dB Comp	+17.0	+14.0		dBm.
NF	4.5		6.0	dB.
Reverse Isolation	45.0			dB.
IP ₃ /IP ₂ (two-tone)	30/44	25/38		dBm.
HIP2 (2 nd harm.)	48.0			dBm.
VSWR In/Out	1.6:1		2.0:1	
Supply Required	+15/110		+15/130	v/mA.

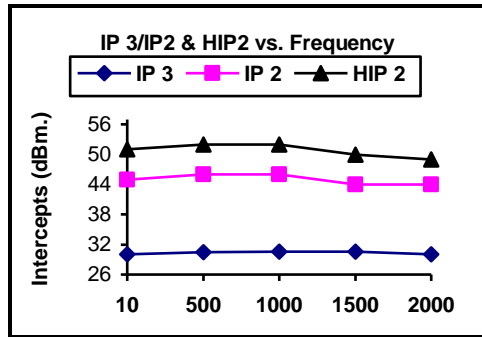
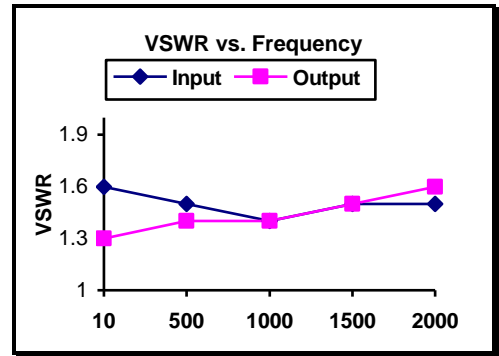
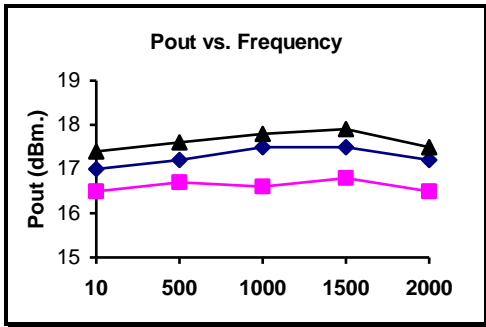
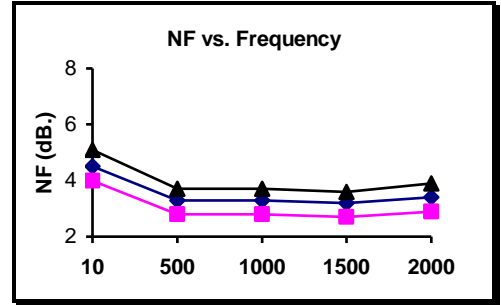
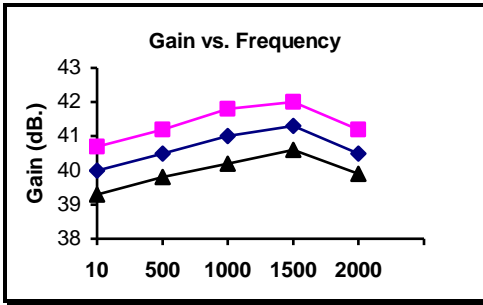
Min. and max. values are from -55°C to +85°C

OUTLINE



Typical Performance Curves

■ -55°C ◆ -25°C ▲ +85°C



FUNCTIONAL BLOCK DIAGRAM

