

ASC666C

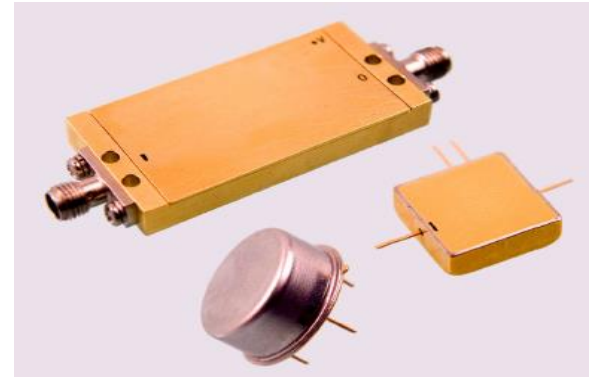
Features: (typical values)

- High Gain 20 dB.
- Super Low Noise Figure 1.0 dB.
- Output Power +20 dBm.
- No External component required.
- Available in TO-8, SMT, Connectorize housing or per customer Requested Package
- **Available in +3V/5V/10V/12V/15V**
- No external components required

Maximum Ratings

- Storage Temperature -62°C to +125°C
- DC Voltage +6 volts
- RF Input Power +10.0 dBm
- Case Temperature +100°C

**10-2500 MHz
Wideband Amplifier
Gain Block
Super Low Cost
Super Low Noise**

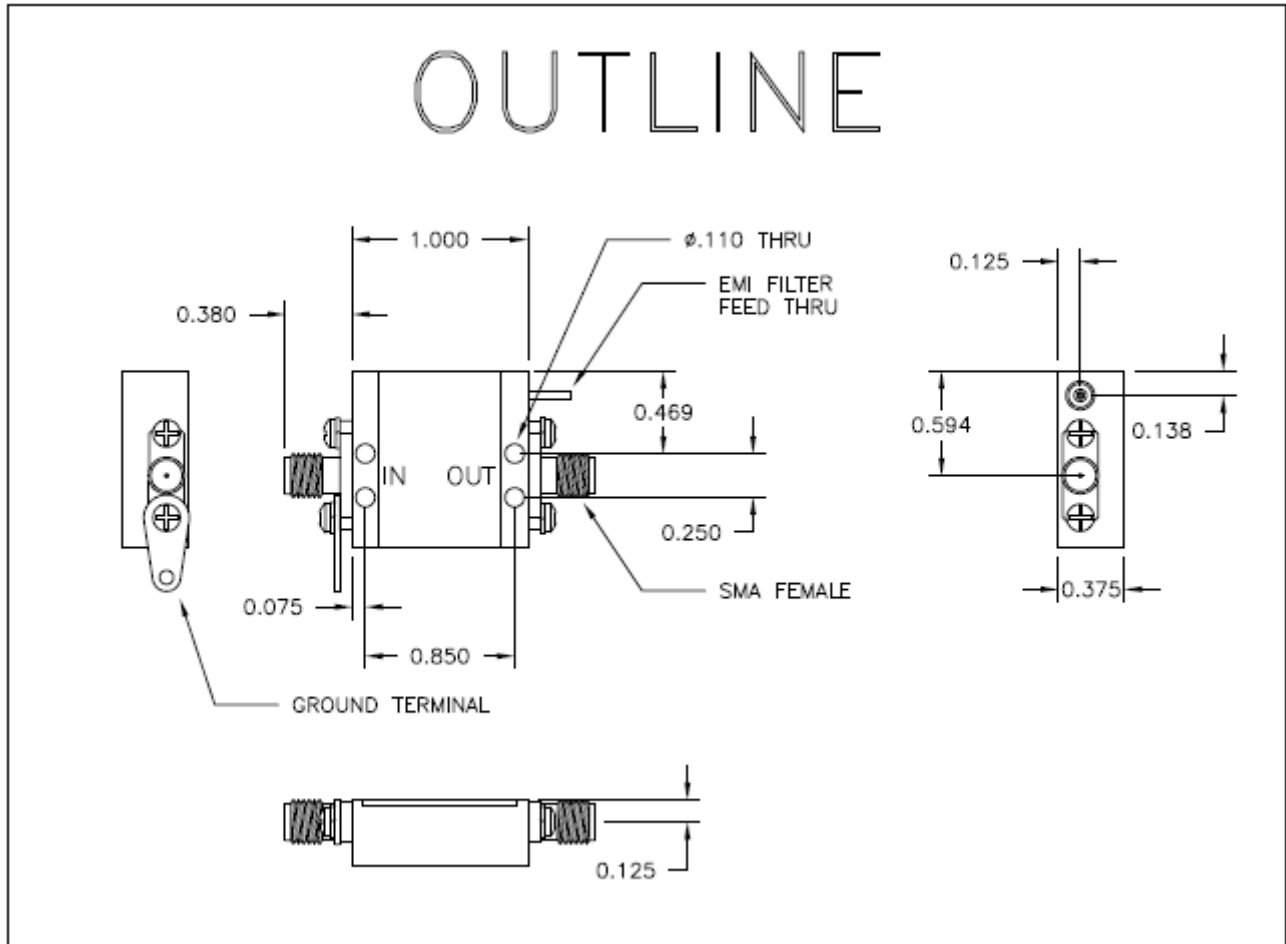


Specifications (Referenced to 50 ohms)

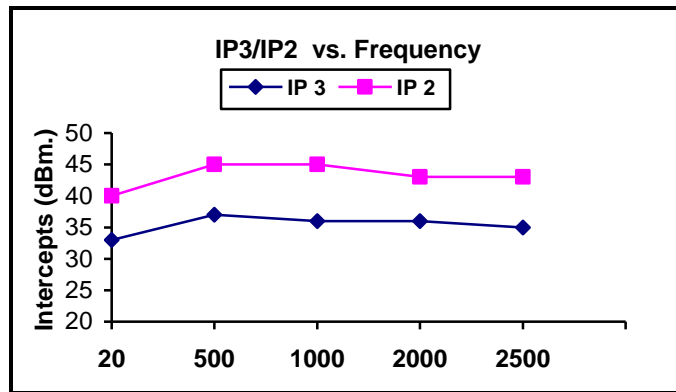
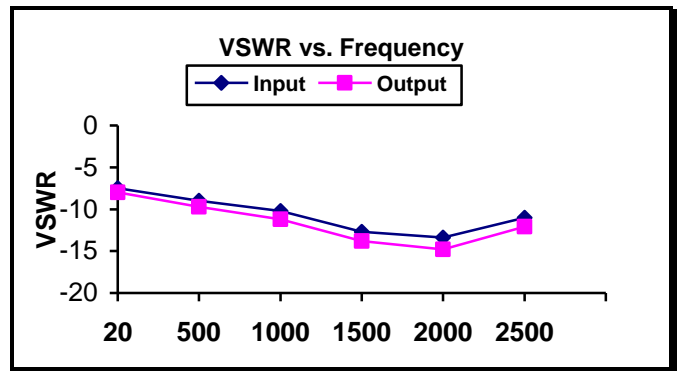
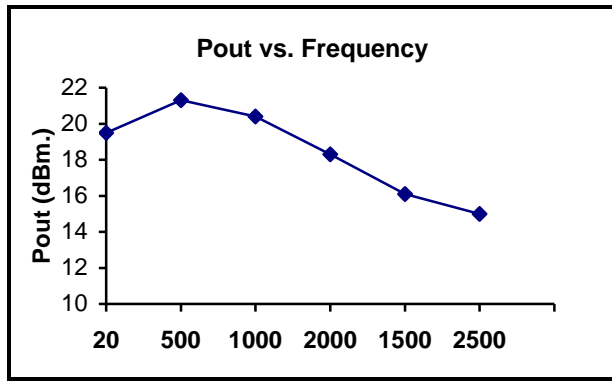
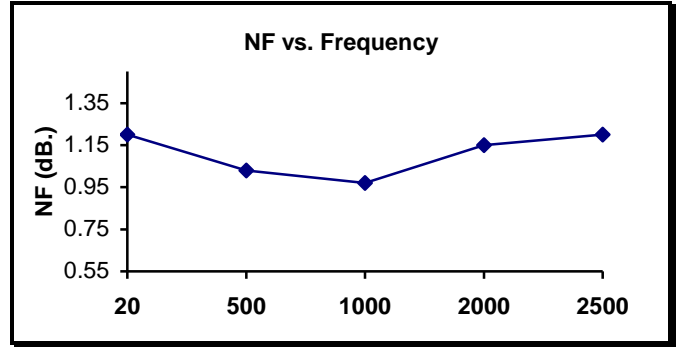
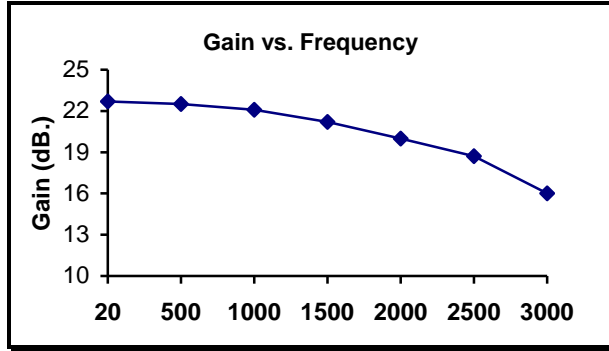
Parameter	Typical Conditions	Min Value	Max Value	Units
Frequency		10	2500	MHz.
Gain at 2 GHZ	20	16.0		dB.
Gain Var. over temp	0.6			ΔdB.
Pout @ 1dB Comp	+20	+15		dBm.
Noise Figure 20-2500MHz	1.0		2.0	dB.
Reverse Isolation	25			dB.
IP ₃ /IP ₂ (two-tone)*	35/45			dBm.
VSWR In/Out 20-2500 MHz	1.8:1		2.5:1	
Supply Required	+5/70		+5/75	v/mA.

Min. and max. values are from 0°C to +85°C
 *IP₃ and IP₂ are in band output intercept points

OUTLINE



Typical Performance Curves @ +25c



FUNCTIONAL BLOCK DIAGRAM

