

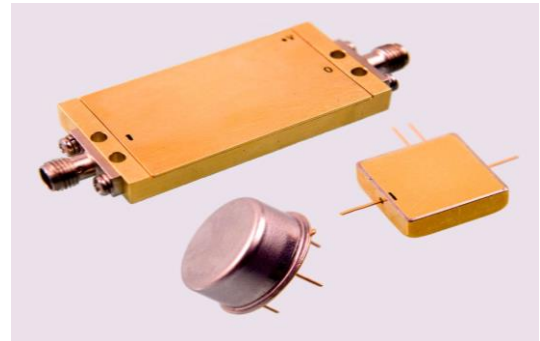
Features: (typical values)

- Output Power +22 dBm.
- Low Noise 5.0 dB.
- High Gain +28 dB.
- No external components required

Maximum Ratings

- Storage Temperature -62°C to +125°C
- DC Voltage +15volts
- RF Input Power CW +10 dBm.
- Case Temperature +95°C

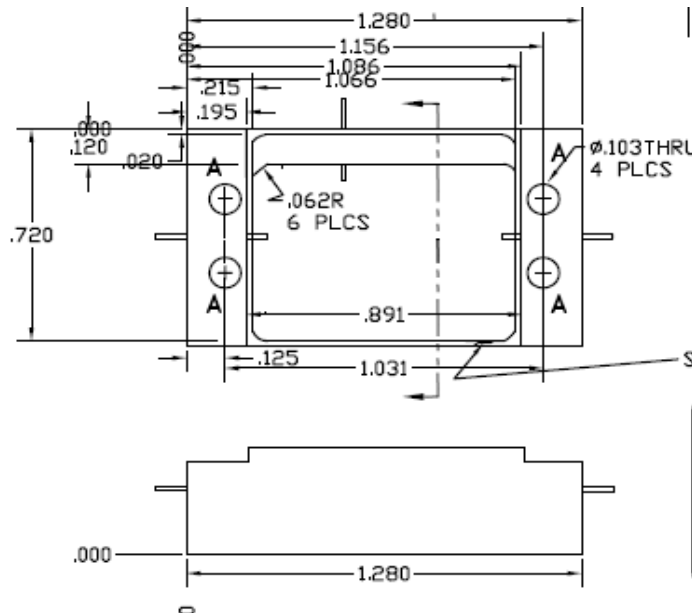
**16CD0031-1
Wideband Amplifier**



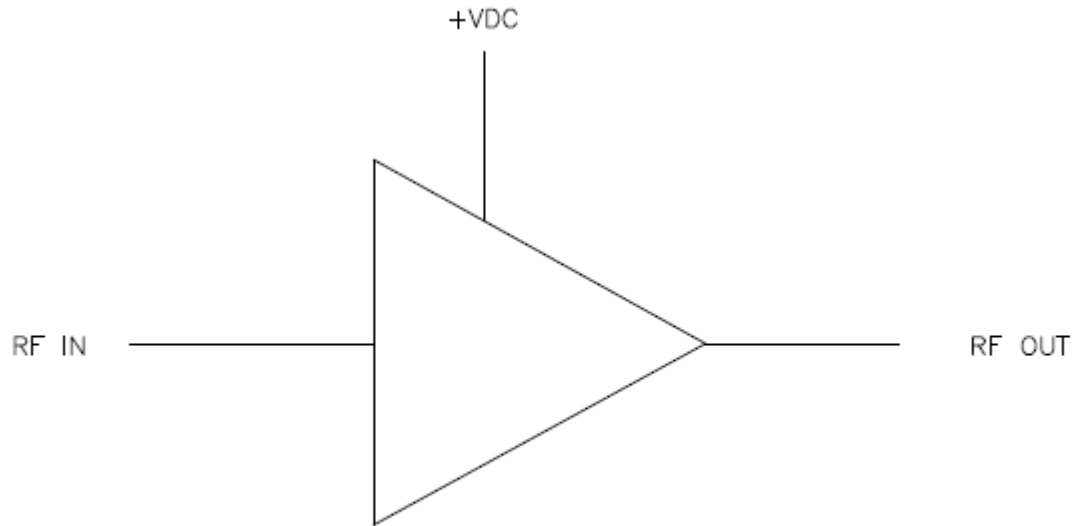
Specifications (Referenced to 50 ohms Impedance)

| Parameter | Typical Conditions | Min Value | Max Value | Units |
|-----------------------------|--------------------|-----------|-----------|-------|
| Frequency | | 2 | 16 | GHz. |
| Gain | 28 | 25.5 | 30.5 | dB. |
| Gain Flatness | ±1.0 | | ±1.5 | dB. |
| Reverse Isolation | | 33 | | dB |
| Pout @ 1dB Comp | 22 | 20.0 | | dBm. |
| Pout @ 3dB Comp | 25 | | 28.0 | dBm. |
| NF | 5.0 | | 5.5 | dB. |
| OIP ₃ (two-tone) | 30 | 28.0 | | dBm. |
| OIP ₂ (two-tone) | 40 | 38.0 | | dBm. |
| VSWR in | 1.8 | | 2.2:1 | Ratio |
| VSWR Out | 1.6 | | 1.8:1 | Ratio |
| Supply Required | | | 15V/750 | v/mA. |

Min. and max. values are from -55°C to +70°C



FUNCTIONAL BLOCK DIAGRAM



NO EXTERNAL COMPONENT REQUIRED