

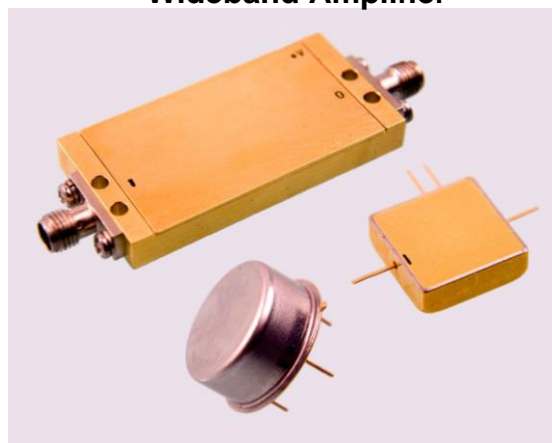
Features: (typical values)

- Very high IP3 +40 dBm.
- High P1dB 26.0 dBm.
- Low NF @ 100-2000mhz 4.0 dB.
- Super low cost
- No external components required

Maximum Ratings

Storage Temperature -62°C to +125°C
 DC Voltage +15 volts
 RF Input Power +20.0 dBm.
 Case Temperature +95°C

**20-3000 MHz
Wideband Amplifier**

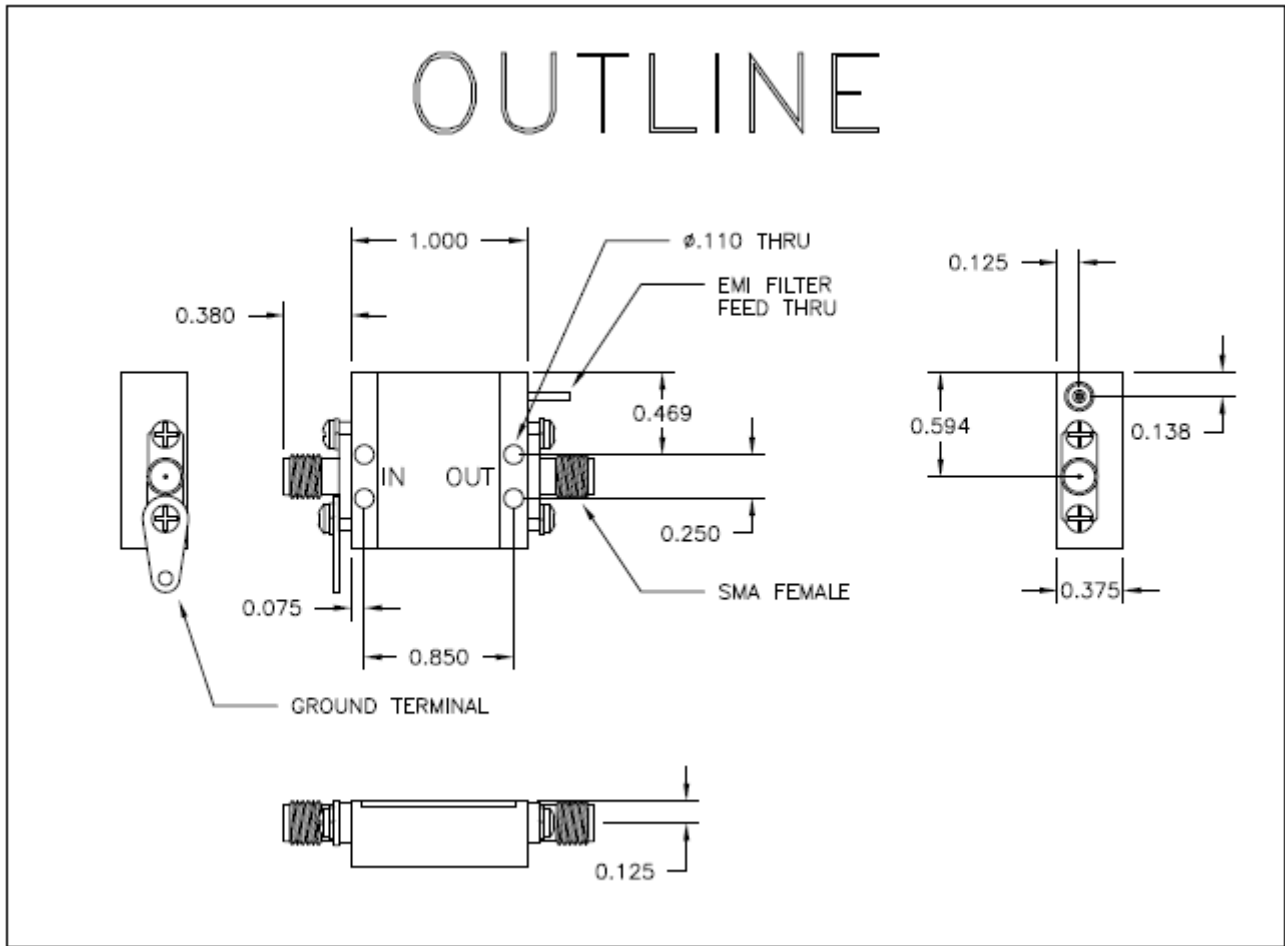


Specifications (Referenced to 50 ohms)

| Parameter | Typical Conditions | Min Value | Max Value | Units |
|---|--------------------------|------------|-----------|-------|
| Frequency | | 20 | 3000 | MHz. |
| Gain | 11.0 | 10.0 | | dB. |
| Gain Flatness | ±0.4 | | ±1.0 | dB. |
| Gain Var. over temp | 0.7 | | | ΔdB. |
| Pout @ 1dB Comp | +26.0 | +25.0 | | dBm. |
| NF | 20-100mhz 100-2000mhz | 9.0 6.0 | 10 7.0 | dB. |
| Reverse Isolation | 16.0 | | | dB. |
| IP ₃ /IP ₂ (two-tone) | 38/50 | 35/40 | | dBm. |
| HIP2 (2 nd harm.) | 55.0 | | | dBm. |
| VSWR In/Out | 1.7:1 | | 2.0:1 | |
| Supply Required | +12/190 | | +12/220 | v/mA. |

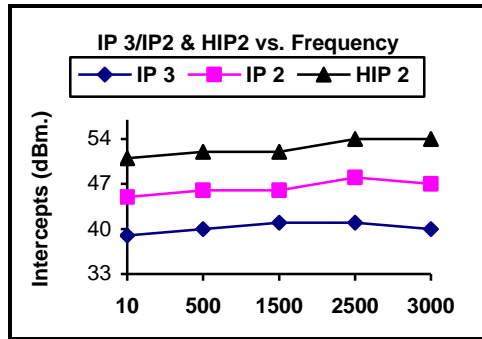
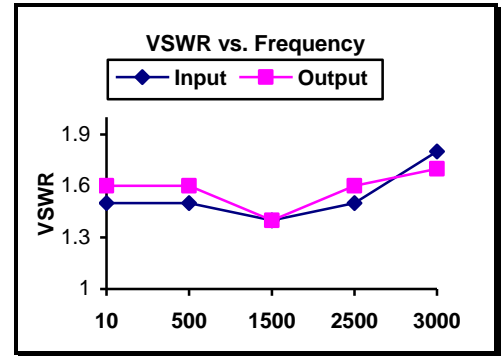
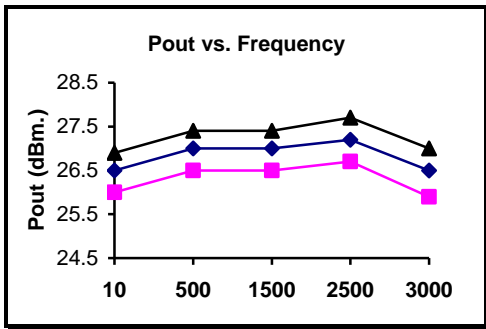
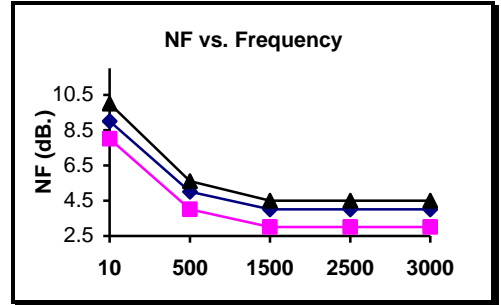
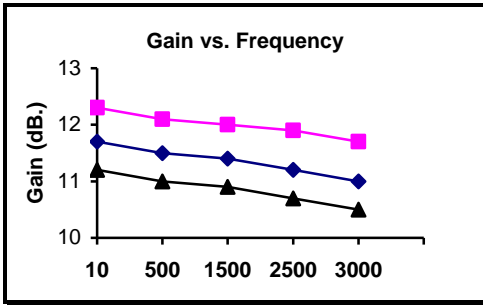
Min. and max. values are from 0°C to +85°C

OUTLINE



Typical Performance Curves

■ -55°C ◆ -+25°C ▲ -+85°C



FUNCTIONAL BLOCK DIAGRAM

