

# ASC422C

## 500-2000 MHz Push-Pull Wideband Amplifier

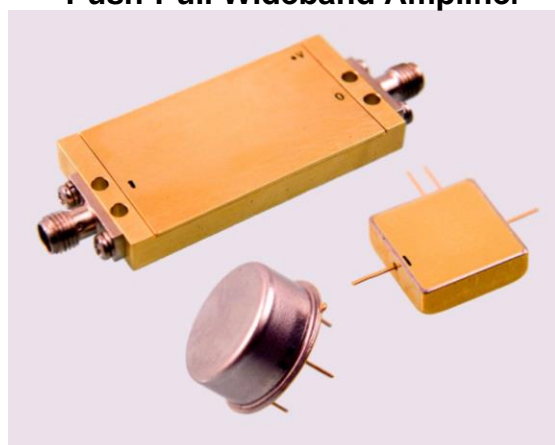
### Features: (typical values)

- Low Distortion
- High Second Order IP2 ..... +65.0 dBm.
- High Third Order IP3 ..... +43.0 dBm.
- No external components required

### Maximum Ratings

Storage Temperature ..... -62°C to +125°C  
 DC Voltage ..... +17 volts  
 RF Input Power ..... +15.0 dBm.  
 Case Temperature ..... +95°C

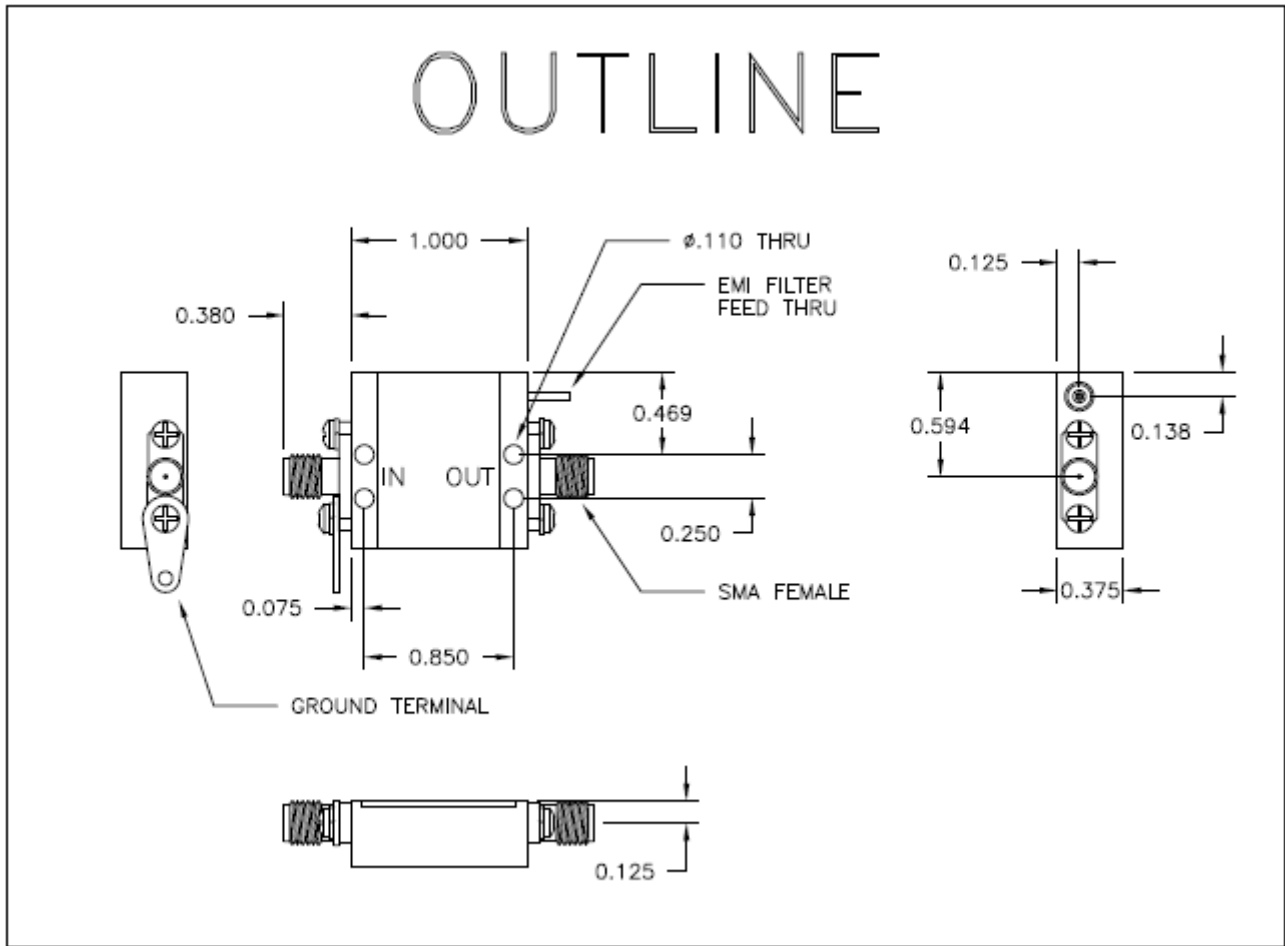
Specifications (Referenced to 50 ohms)



Parameter	Typical Conditions	Min Value	Max Value	Units
Frequency		500	2000	MHz.
Gain	12	10.0		dB.
Gain Flatness	±0.4		±1.0	dB.
Gain Var. over temp	0.7			ΔdB.
Pout @ 1dB Comp	+28	+26		dBm.
Noise Figure	4.0		6.0	dB.
Reverse Isolation	17.0			dB.
IP <sub>3</sub> /IP <sub>2</sub> (two-tone)*	43/65	38/60		dBm.
HIP2 (2 <sup>nd</sup> harm.)	75			dBm.
VSWR In/Out	1.7:1		2.0:1	
Supply Required	+15/350		+15/380	v/mA.

Min. and max. values are from -40°C to +85°C  
 \*IP<sub>3</sub> and IP<sub>2</sub> are in band output intercept points

# OUTLINE



FUNCTIONAL BLOCK DIAGRAM

