

ASC400C

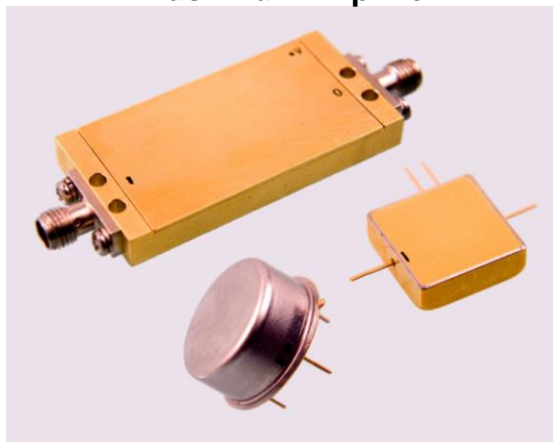
20-500 MHz Push Pull Amplifier

Features: (typical values)

- Low Distortion
- High Second Order IP2 +80.0 dBm.
- High Third Order IP3 +42.0 dBm.
- Hermetic Package (Surface Mount available)
- No external components required

Maximum Ratings

Storage Temperature -62°C to +125°C
 DC Voltage +17 volts
 RF Input Power +15.0 dBm.
 Case Temperature +95°C



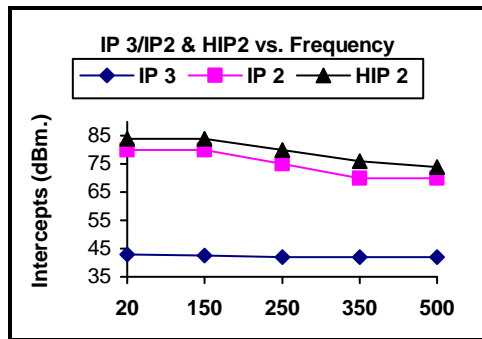
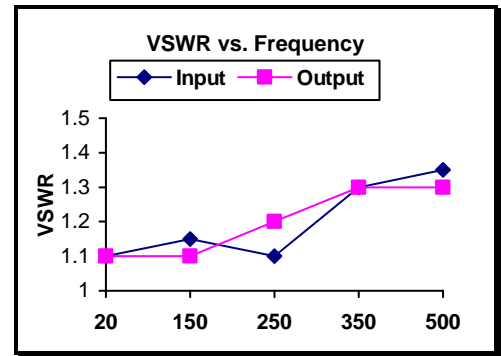
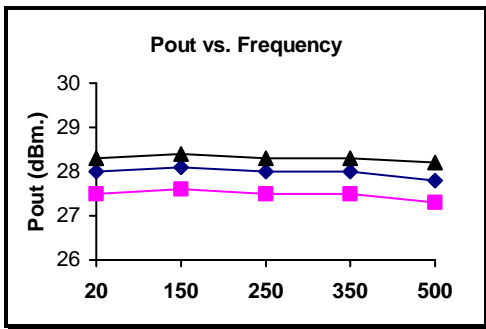
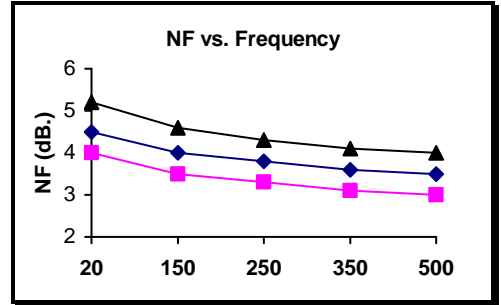
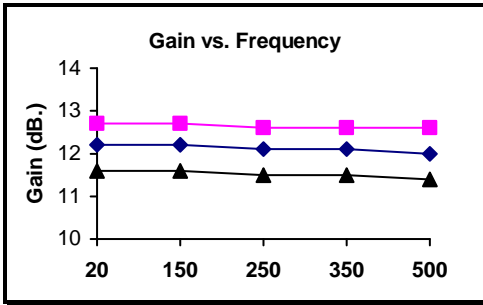
Specifications (Referenced to 50 ohms)

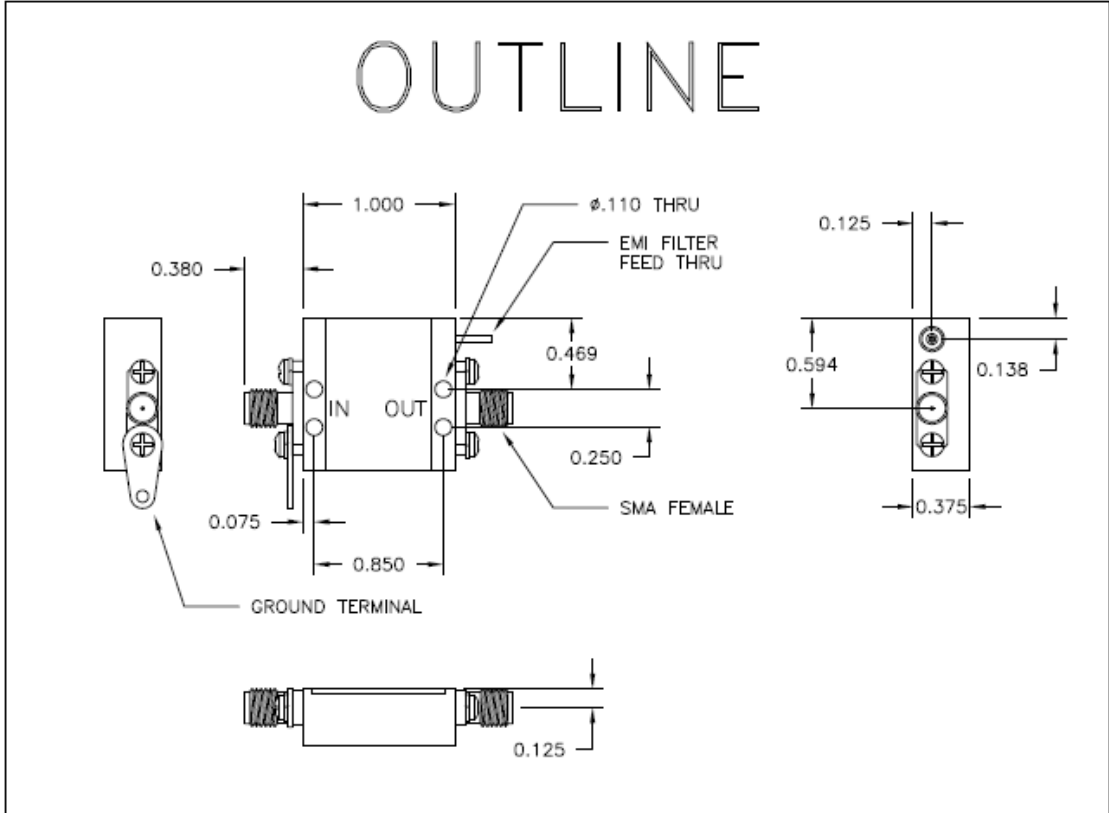
Parameter	Typical Conditions	Min Value	Max Value	Units
Frequency		20	500	MHz.
Gain	12	11.0		dB.
Gain Flatness	±0.3		±0.8	dB.
Gain Var. over temp	0.7			ΔdB.
Pout @ 1dB Comp	+28	+25		dBm.
Noise Figure	4.5		6.0	dB.
Reverse Isolation	18.0			dB.
IP ₃ /IP ₂ (two-tone)*	42/80	40/70		dBm.
HIP2 (2 nd harm.)	85	75		dBm.
VSWR In/Out	1.3 :1		1.5 :1	
Supply Required	+15/230		+15/250	v/mA.

Min. and max. values are from -55°C to +85°C
 *IP3 and IP2 are in band output intercept points

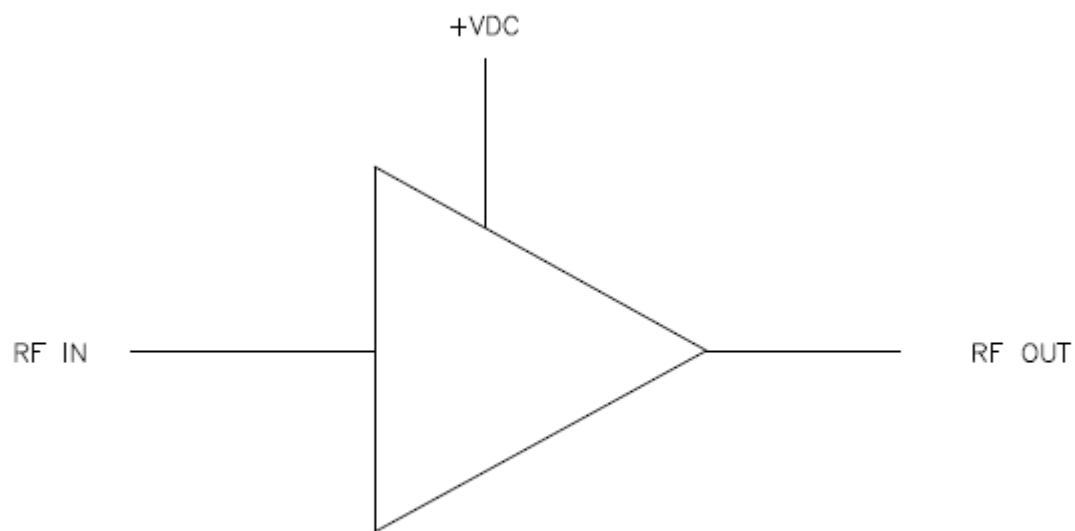
Typical Performance Curves

■ -55°C ◆ +25°C ▲ +85°C





FUNCTIONAL BLOCK DIAGRAM



NO EXTERNAL COMPONENT REQUIRED